



Storage Systems

BATTERY STORAGE SYSTEM OUTDOOR BSO PRO 90/109



- All-in-one outdoor battery storage system – ON/OFF-Grid capable
- On-Grid 90kVA / 75kVA backup power (120% overload)
- Phase unbalance up to 20kVA (transformerless)
- Black start capable
- Diode load (up to 1kW)
- On/off grid switching ≤ 5 s – Local switch box to ensure grid switching
- High HW safety standard – fire protection system, gas & smoke sensors
- High security due to state-of-the-art SW architecture – encrypted communication, digital cloud twin and 2-factor authentication

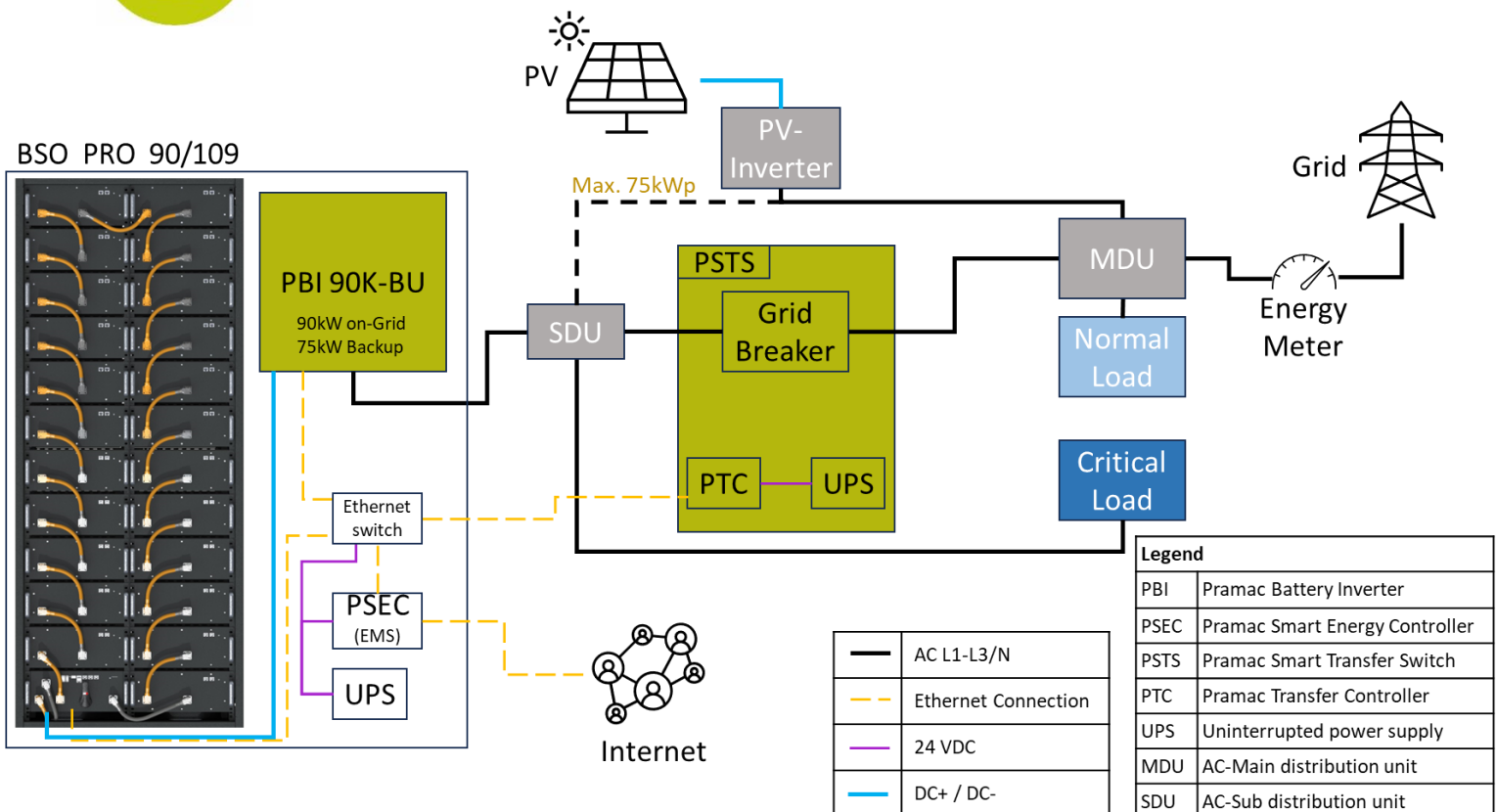


- Higher added value – by reducing operational downtimes
- Autonomous energy supply – supplying critical infrastructure
- Self-sufficiency in remote areas
- Supports the use cases – Self Consumption / Charging solutions / Energy Trading / Peak shaving / Time of Use (ToU) / Grid Services

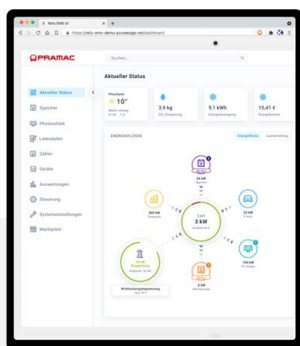


- Retrofitting of existing Pramac systems possible
- Simple integration of the grid control box
- PV installation up to 75kWp in SDU possible

BSO PRO 90/109



DATASHEET BSO PRO 90/109



TECHNICAL DATA OUTDOOR SYSTEM

BSO PRO 90/109

Battery data

Total capacity (kWh)	109
Rated capacity (kWh) (90% DoD)	98
Rated voltage (Vdc)	736
Cell type	Li-Ion (LFP) Pouch
Cycles @ 90% DoD 65% SoH 1C/1C	7.300

Battery Inverter

PBI 90K-BU

Rated power (kW)	90* (ON-Grid) / 75 (Backup)
Rated voltage (Vac)	380 / 400 / 415
Maximum AC current (A)	130
AC grid connection	3P, N, PE / TN-C-S
Rated frequency (Hz)	50
THDi (%)	< 3
AC power factor / range	1 / 0i ... 0c
Max. Efficiency (%)	98,6
Topology	Transformerless

*Power reduction from 33 °C ambient temperature

Safety devices System

Safety devices	Active devices	<ul style="list-style-type: none"> Permanent monitoring of the battery cells CO sensor H₂ sensor Smoke sensor Exhaust fan
	Passive devices	<ul style="list-style-type: none"> Extinguishing system with Novec 1230 Overpressure flap

DATASHEET BSO PRO 90/109

General data			
Operating temperature range (°C)		-20 to +50	
Cooling/heating concept	Battery room	Cooling power 2 kW Heating power 1 kW	
	Inverter room	Smart active cooling	
Dimensions (W×D×H, mm)		1500×1108×2320	
Total weight (kg) Incl. batteries and inverter		2.150	
Protection class		IP 65 (Battery room) / IP 54 (Inverter room)	
Max. permissible installation height (m)		3.000	
Corrosion resistance of the housing		C3	
Colour housing		RAL9016 Traffic White / Pantone 382 C	
Interfaces		RJ45 (Ethernet)	
Certification / Approvals	Battery system	CE / UN 38.3 / UN 3481 / IEC 62619 / IEC 63056 / UL 1973 / UL 9540A / VDE 2510-50 / EN 61000-6-2 / EN 61000-6-4	
		EU Directives	2014/30/EU / 2014/35/EU / 2011/65/EU
	Battery inverter	Product safety	IEC 62109-1 / IEC 62109-2 / IEC 62116 / IEC 61727 / IEC 62477-1 / IEC 61439-1 / IEC 61439-2 /
		Grid connection conditions	VDE AR-N 4105:2018 / VDE AR-N 4110:2018 / TOR Erzeuger Typ A/B / EN 50549-1/-2 More in progress (Q3-Q4/24)
Warranty		5 years product warranty 10 years performance guarantee	

DATASHEET BSO PRO 90/109

TECHNICAL DATA	PRAMAC SMART TRANSFER SWITCH (PSTS)
Dimensions (B×H×D)	600 × 1000 × 400 mm
Mounting / Assembly	Floor or wall (Indoor)
Number of poles	4-pole (L1-L3, N)
Rated operational current, AC-23A 400 V	315 A
Terminal bolt size	M10×30
Weight	80 kg

Pramac Smart Energy Controller (PSEC) PSEC-DMXX

Basic functions



Monitoring – visualization of energy flows & 24/7 historical data



Local & Cloud access



Operations management



Peak shaving



Self-consumption optimization



Time-of-Use

Interfaces



Local and Cloud-to-Cloud REST API

Compatible with

Charging stations

EnerCharge

Alpitronic

Energy meter

Janitza

Acrel

Carlo Gavazzi

Text and illustrations correspond to the technical status at the time of printing. We reserve the right to make technical changes. No liability for printing errors. The current version replaces all previous versions. You can find the latest version at www.pramac.com