

# freedom beyond limits

PWB SERIES | PORTABLE POWER STATIONS







# freedom beyond limits

AS OUR GUIDING PRINCIPLE, WE EMPOWER YOU TO BREAK FREE FROM CONVENTIONAL ENERGY CONSTRAINTS, ENABLING LIMITLESS POSSIBILITIES FOR YOUR POWER NEEDS. EMBRACE THE FUTURE OF ENERGY AUTONOMY AND UNLOCK UNPRECEDENTED FREEDOM WITH OUR PORTABLE POWER STATION TECHNOLOGY.







# PWB 1200





# APPLICATIONS

Pramac portable power station can be used to power a wide range of electronic devices, including laptops, smartphones, tablets, cameras, and even small appliances like portable heaters, hair-dryer, electric kettles and grills.



PHONE / 10WH  
>90 charges



LAPTOP / 50 Wh  
>20 charges



LIGHTING / 10 Wh  
>90 hours



WI-FI Router / 12 W  
>80 hours



KETTLE / 1000 W  
1 hours



TV / 140 W  
>7 hours



REFRIGERATOR / 100-200 W  
10-5 hours



GRILL / 800W  
1.2 hours

# TECHNICAL DATA

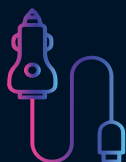
Capacity   Battery Life @80%	1075 Wh   2000 Cycles (LFP)
Running W   Amps	1200 W   5.2A
Surge W*   Amps	2400 W   10.4A
Wall Charge Time @80%	1 h (800 W) Quick charger included
Product Weight (KG)   Dimension (LxWxH)	16,2 KG   376x215x262 mm
IP Protection	IP20
EPS Feature	Emergency. Power Supply, switching time ≤10mS
Warranty	2 Years

\* 1.5 sec @131% surge watt | @ 200% surge watt holds it for 300 milliseconds

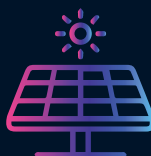
# FEATURES



EXTREME  
FAST WALL CHARGER  
800W 1h @ 80%



CAR LIGHTER  
12V/8A | 11h @80%



SOLAR PANEL CONNECTOR  
Max 400W 2.1h @80%



LFP  
BATTERY



1X WIRELESS  
CHARGER



PARALLEL CONNECTOR  
Power up to 3600 W



2 X SCHUKO  
SOCKETS



1X CAR SOCKET DC 12V 16A  
2X DC 12V 5A; 2X USB-C  
2X USB A-FAST; 2X USB-A



# APPLICATIONS

The portable power station can be used to power a variety of electronic devices, such as laptops, smartphones, tablets, drones, and small appliances like mini-fridges, electric kettles, portable fans, and drills.



PHONE / 10WH  
>90 charges



LAPTOP / 50 Wh  
>20 charges



LIGHTING / 10 Wh  
>90 hours



FAN / 50 W  
38 hours



DRILL/ 1000 W  
1.9 hours



COFFEE MACHINE / 1000 W  
>1.9 hours



REFRIGERATOR / 100-200 W  
10-5 hours



GRINDER / 900 W  
2 hours

# TECHNICAL DATA

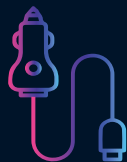
Capacity   Battery Life @80%	2150 Wh   2000 Cycles (LFP)
Running W   Amps	2400 W   10.4 A
Surge W*   Amps	4800 W   20.9 A
Wall Charge Time @80%	1 h (1800 W) Quick charger included
Product Weight (KG)   Dimension (LxWxH)	29,5 KG   496x266x350
IP Protection	IP20
EPS Feature	Emergency. Power Supply, switching time $\leq 10\text{ms}$
Warranty	2 Years

\* 1.5 sec @131% surge watt | @ 200% surge watt holds it for 300 milliseconds

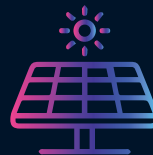
# FEATURES



EXTREME  
FAST WALL CHARGER  
800W 1h @ 80%



CAR LIGHTER  
12V/8A | 11h @80%



SOLAR PANEL CONNECTOR  
Max 400W 2.1h @80%



LFP  
BATTERY



2X WIRELESS  
CHARGER



PARALLEL CONNECTOR  
Power up to 3600 W



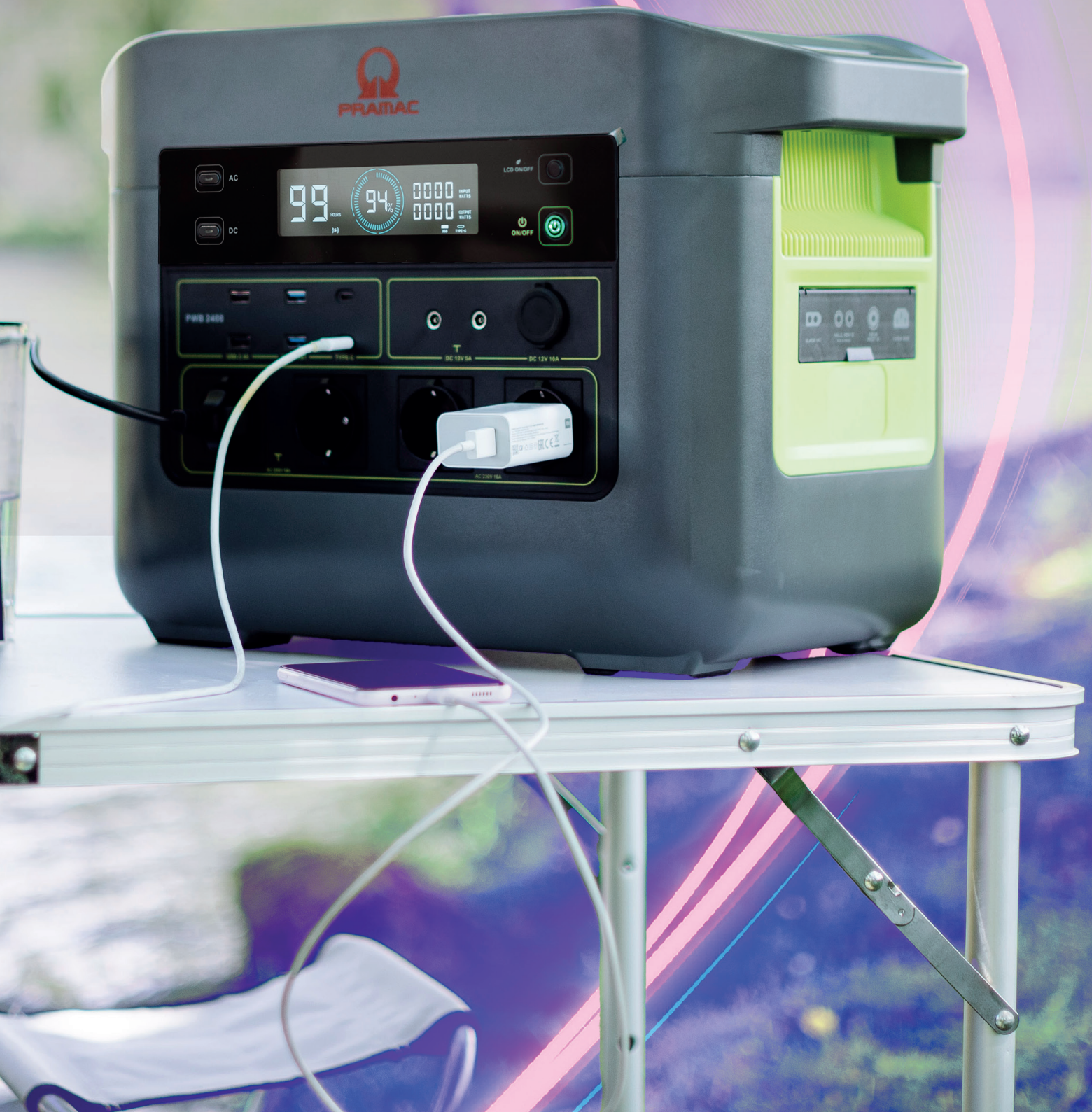
4 X SCHUKO  
SOCKETS



1X CAR SOCKET DC 12V 16A  
2X DC 12V 5A; 2X USB-C  
2X USB A-FAST; 2X USB-A



# PWB 2400





# EMBRACE freedom beyond limits

WHETHER YOU'RE CAMPING IN THE WILDERNESS, EMBARKING ON A ROAD TRIP, OR DANCING OUTDOORS, OUR PORTABLE POWER STATIONS ENSURE YOU STAY CONNECTED AND POWERED UP. ENJOY YOUR LEISURE TIME WITHOUT BOUNDARIES, KNOWING YOU HAVE A RELIABLE AND SUSTAINABLE ENERGY SOURCE AT YOUR FINGERTIPS. EMBRACE THE FREEDOM TO EXPLORE AND LIVE OFF-GRID WHILE MAINTAINING ACCESS TO ESSENTIAL POWER.







PRAMAC

PWB 1200

88  
100%  
PWB 1200  
PRAMAC  
DC 12V 16A  
DC 12V 5A  
TYPE-C  
USB-FAST  
USB-2.4A  
INPUT WATTS  
OUTPUT WATTS  
LCD ON/OFF

DC ON/OFF  
ON/OFF  
AC ON/OFF  
LCD ON/OFF



# GO SOLAR

THE PORTABLE POWER STATION COMBINED WITH SOLAR PANELS PROVIDES AN ECO-FRIENDLY AND SUSTAINABLE ENERGY SOLUTION, REDUCING YOUR CARBON FOOTPRINT WHILE ENSURING YOU HAVE CONTINUOUS, CLEAN ENERGY EVEN IN THE MOST REMOTE LOCATIONS.

## PWB SOLAR PANEL 200 W

Rated Power	200 W
Number of Folding	4
Output Interface Mode	MC4 Output Cable
Weight	8.4 kg
Open Dimension (LxHxW)	2390*564*25 mm

## SOLAR CHARGING @80%

Charging PWB 1200	4 h (200W)   2,1 h (400W)
Charging PWB 2400	5 h (400W)   8 h (200W)



1

TAKE OUT THE WIRING HARNESS OF THE SOLAR PANEL.



2

CONNECT THE WIRING HARNESS AS SHOWN





3

INSERT THE XT60 INTERFACE INTO THE SOLAR CHARGING INTERFACE



4

ONCE CONNECTED, THE SOLAR ICON WILL APPEAR IN THE BATTERY PACK DISPLAY.



# 2X POWER\* AUTONOMY



[www.pramac.com](http://www.pramac.com)



\*POWER UP TO 3600 W  
PARALLEL WIRES AVAILABLE SEPARATELY AS OPTIONAL.



The product images shown are for illustration purposes only and may not be an exact representation of the product. The manufacturer reserves the right to introduce changes to models and features without prior notice.  
EN/06\_2024\_rev.1